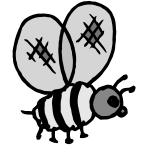


The Bee Line



www.sacbeekeepers.org

2010—Issue 05

May 2010

2010 CLUB OFFICERS

President: Brian Fishback
bfishback@frontiernet.net

Vice President: Anita Winn-
saba2010vp@gmail.com

Secretary: Joseph Watkins

Treasurer: Mil Sutter

info@sacbeekeepers.org

Phone: 916-222-7807

COMMITTEE CONTACTS

Donations: Nancy Stewart

Hospitality: Mil Sutter

Library: Kathy Mallory

Mentors: George Bleekman

Newsletter: Kathy Waldorf –
sacbeeline@comcast.net

Inventory: Joseph Watkins

WebMaster: Martha Maldonado

Membership Chair—Mil Sutter

INSIDE THIS ISSUE:

President's Corner	1
Did You Know?	2
April Minutes	3-4
Honey Recipe	5
Membership Coupon	4
Classified	5
Calendar of Events	6

Mission Statement:

To promote interest in, and awareness of, the vital importance of the honeybee and beekeeping to agriculture, commerce, and the public at large.

Mentors' Tips for May

Swarm season continues with the warmer weather, so check that your bees have adequate space and also check for queen cells. Swarming can cause you to lose 60 to 90 percent of your bees. Also check that your queen is laying eggs and requeen if necessary.

Submitted by Howard Mann



PRESIDENT'S CORNER

There is a new buzz in town and it's coming from you! It was wonderful to see the show of hands at April's SABA meeting of all the members now with bees. Each spring I find myself more and more being aware of the current weather and what weather lies ahead, and asking myself "what are my bee's needs to build out become established and stay strong?" Thinking that we're still on the cusp of the nectar flow, I'm constantly looking around to see if there is plenty of pollen and nectar for my foragers to gather. What amounts of pollen and nectar will be available when the brood starts hatching and is a pollen patty or continuous feeding in order?

Looking forward, I continue to add my observations to my journal so I can easily see how my colony is going to change. Recording what I observe in the hive and knowing the cycle of the bee from the day the egg is laid helps assist me in forecasting what the colonies needs are going to be. My information not only helps me track the past, but assists me in preparing for the future and for knowing what material I will need to have on hand. Being able to review my notes gives me points of interest I might want to read up on to help me understand what am I seeing and what I might want to ask another beekeeper about. In my first year, I made a check list so I was reminded to look for characteristics. Hive management is one of the major roles that has a learning curve.

Knowing that the bees are constantly arranging their hive, I find it not so important that I actually see the queen, but that I'm seeing signs that my queen is actively contributing.

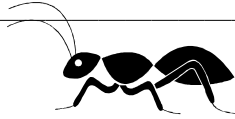
With SABA getting more and more popular in the community, the number of request for our appearance in schools, fairs, etc has grown. Please consider being part of these events and sharing your experience with other enthusiasts. It's very simple, exciting and rewarding.

This year, the association has a great number of new and veteran beekeepers, including a vast network of constantly learning and knowledgeable beekeepers. Call or email us for any or your questions so that together we can stay connected, strong and healthy in our beekeeping..

Brian Fishback
SABA President



Did You Know?

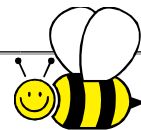


Well of course you know that ants can be a problem if they overwhelm a colony. You no doubt also know that there are varied ways of dealing with them. Here are just a few I have gleaned from various sources and word of mouth. This is not a testament as to the effectiveness of any of them. They are offered for “what they are worth”. Several are similar there is probably no reason some could not be used in tandem.

Note: not all ants are bad, if you are finding them only under the hive or in the tray under the screen bottom board you will probably notice that they are cleaning up dead bees and consuming dropped varroa mites.

- Soapy water; one teaspoon of dish detergent in spray bottle. Apparently the concept is to spray the soapy water directly on the ants to kill them. I guess it may also mask the trail scent.
- Water mixed with citrus peels. Your guess is as good as mine; the citrus oil kills the ants? The citrus scent masks the trail?
- Catnip ground up sprinkled in the ant trail/path
- One tablespoon each of peanut butter and honey and one teaspoon of boric acid mixed into a paste. Place into a small jar or container of whatever type. Place small holes in the lid large enough for the ants to get in but too small for bee access. Place in the area of ant trails. The ants should find it, get in and carry the “food” back to their nest where the boric acid will kill the ants at the source. This will not be an overnight process but should be more permanent. *Material formula from Randy Oliver class.*
- Borax and sugar syrup. Two cups sugar, one cup water, one tablespoon borax. Boil to dissolve the dry ingredients. Put in small jars or containers with holes large enough for ants to enter and exit but too small for bees. Place the container in the area of the ant trail.
- One part borax, two parts mint jelly on cracker crumbs. Mix and place in small jar with holes large enough for the ants to enter and exit. They carry the bait back to the nest and the result is the nest is killed off.
- Ants don't like Spearmint plants.
- One part dry yeast, one part molasses with enough water to thin to a paste. Use as bait in small lids or jars with access holes for the ants. The ants carry the material back to the nest – control will take two weeks.
- Natural ant repellents; powdered charcoal, turmeric, cayenne pepper, cinnamon, citrus oil.
- Diatomaceous earth (available at swimming pool supplies or pool supply areas of big box stores) sprinkled around the area to be protected or across ant trails. This powder kills by physical not chemical action.

Compiled by Ernie Buda



Help reinstate Boy Scouts Beekeeping merit badge!

One of our association members passed along an email from the Beemaster Forum requesting assistance for Christopher Stowell, a young Boy Scout and beekeeper. Christopher needs help to convince the Boy Scouts of America to reinstate the Beekeeping Merit Badge. That badge was discontinued about 15 years ago. Support for reinstating this merit badge, along with people willing to sign up to be Boy Scout mentors, are needed.

You can help by signing Christopher's online petition and asking others to do the same. This petition is located at: <http://www.experienceproject.com/beepetition>

To more information, or to sign up to be mentor, please see the “Reinstate the BSA Beekeeping Merit Badge” thread on Beemaster, which is located here: <http://forum.beemaster.com/index.php/topic.27214.0.html>

APRIL MINUTES AND PROGRAM NOTES



President Brian Fishback called the monthly Association Meeting to order at 7:30pm on Tuesday, April 20th, 2010 at the [Belle Coolidge Community Center](#), with 79 people present. Six new attendees introduced themselves. Brian turned the time over to SABA officers:

[Anita Winn](#), Vice President and Events Coordinator – announced upcoming events. (see back page)

[Joseph Watkins](#), Secretary – Please give your name when giving questions comments.

[Mil Sutter](#), Treasurer – If you did not get a newsletter this month, it may be because you haven't paid your dues. If dues aren't paid by March 15th, names are deleted from the roster. See Mil!

[Kathy Waldorf](#), Beeline Editor - If you did not get a newsletter, it may also be because your address bounced back due to incorrect Email address. See Mil Sutter! Always soliciting articles and items of interest, please submit by the 25th of the previous month. Paper copies are available at the table in the back of the room.

[Ernie Buda](#), Education Coordinator, reported that there was an attendee in one of the classes who is starting a Sierra foothills beekeeping association that some of us may be interested in joining. See Ernie for info. Upcoming beginning classes are full, but there are still a few slots in intermediate classes June 19th with [Dr. Eric Mussen](#) and July 17th with [Serge Labesque](#). [Email Ernie](#) to enroll.

Brian spoke for [Kathy Mallory](#), Librarian, in her absence, to encourage us to return overdue library books. The association is growing in leaps and bounds and so many people can use the books!

Brian turned the time over to [George Bleekman](#), "Captain of the Mentors," to lead a Question and Answer period with SABA Mentors Bob Sugar, Randy Kehoe and Ernie Buda. Some topics:

[Stephen Engel](#), asked about reducing moisture in the hive using salt as a desiccant. Although there was no agreement that this was a good thing to do, other suggestions were presented. Bob suggested slightly raising the lid as a vent and tipping the hive forward to drain rainwater. Ernie uses vented inner covers, insulated telescoping outer covers, and a top feeder as attic space to reduce and catch condensation. [Fred Stewart](#) reduced wintertime condensation with cardboard insulation around the hive. Randy and Bob use migratory lids that "warp with time and allow plenty of air space."

Someone asked how to gather a swarm high in a tree. Bob reminded all to use common sense and put safety first. A "free" swarm is not worth getting hurt. Ernie bolts a five-gallon bucket to a long aluminum swimming pool skimmer pole with a cap nut, so that it stays level under the weight of the swarm. George has never collected swarms the same way twice, they are so different. The main key to catching a swarm is to get the queen into your device. Once she is in the box, the rest will march in like soldiers.

Howard Mann asked how long a swarm survives without a home. There is no definitive answer, according to George, and they may stay out from five minutes to all summer long, depending on the nectar sources.

Questions and answers about capturing swarms filled the remainder of the time until the Association Meeting adjourned at 8:34, and Mentors continued fielding questions during the break.

The Business Meeting came to order at 8:58 pm with 34 in attendance. Brian Fishback invited all interested members to attend Executive Board Meetings on the Second Tuesday each month at 7:00 pm at the International House of Pancakes at 3525 Bradshaw Road, Sacramento, 95827.

Brian discussed the Executive Board's commitment to begin meetings punctually and to make efficient use of time. We will follow the format used at tonight's Association Meeting, with the President allowing time for each Officer to present

pertinent items, prior to the scheduled program.

Brian reported the Executive Board's continuing efforts to:

Select a general liability insurance policy to cover SABA at public events.

Develop policies to determine case-by-case whether public demonstrations will be SABA-sponsored events, or are individual efforts, with materials support from SABA, for liability concerns.

Develop an Event Report form to document SABA community efforts.

Create Special Interest Groups for various activities, such as a "bee crawl" member aviary tour, woodworking projects, horticulture workshops, political advocacy.

Brian invited any other suggestions for the board to address.

Someone suggested we post upcoming Association meeting topics. They do appear in the previous month's Beeline.

Ernie Buda asked if we have confirmed U.C.Davis Entomologist [Sue Cobey](#)'s availability for the SABA Annual Picnic at the [Harry Laidlaw Research Facility](#). Anita will follow up.

[Richard Cuny](#) asked about expenses for continued use of this building. We pay \$75 for the evening each month. The city offered another location but could not guarantee future low rates. Other scouted locations were \$300 to \$400 a night. We will stay at present location for ease of location.

The business meeting adjourned at 9:13 pm.



SABA 2010 Membership Coupon

Name(s)*: _____

Business Name: _____

Mailing Address: _____

City, State Zip:* _____

E-mail Address*: _____ Phone #*: () _____

New ____ or Renewing ____

Current level of beekeeping activity: _____

Privacy Notice: To facilitate sharing of information and carpooling, SABA publishes a member "phone list" each spring, including member names, cities or zips of residence (*not* street addresses), email addresses, and phone numbers. This summary list is *only* disseminated to current SABA members (never to other persons or organizations) and is *not* posted on the website. Your information (noted by * above) will be included unless you check (following line(s)) that you do not want your ____ email address and/or ____ phone number listed. (Note that the complete membership list is made accessible to SABA officers and committees as necessary for them to do their tasks.)

*Complete this, clip it out, and mail it with your \$15 check (made out to SABA), to
SABA c/o Sacramento Beekeeping Supplies, 2110 X Street, Sacramento, CA 95818, Attn: SABA Treasurer.*

**Please take a moment and write down your interests and needs on the reverse side,
this will help the association mold our meetings.**

Strawberry Balsamic Salad

RECIPE(S) OF THE MONTH

Whisk together 3 Tbsp extra virgin oil, 2 Tbsp Balsamic vinegar, 1 Tbsp of honey, 1/4 tsp salt and freshly ground pepper in a large bowl until blended. Add 8 Cups spring salad mix, 1/3 cup chopped dry roasted almonds and 2 sliced green onions. Add 2 cups sliced strawberries and toss again lightly. Makes 6 servings.

Honey and Walnut Crusted Salmon

4—6 oz Salmon Filets

Freshly ground sea salt and pepper to taste

3 Tbsp honey

3 Tbsp stone ground mustard

1/2 Cup finely chopped walnuts

1. Preheat oven to 400F and spray a baking sheet with nonstick cooking spray
2. Rinse salmon and pat dry. Place skin side down on baking sheet and season with salt and pepper
3. Stir together honey and mustard and spoon over the top and sides of salmon fillets. Sprinkle with walnuts and bake for 10-15 minutes or until salmon is cooked to your liking.

Recipes from Raley's Spring 2010 [Something Extra](#)



Your contributions of articles, websites, recipes, tips, questions, book reviews, ads and other bee-related items for future newsletters. Email them to Kathy Waldorf by the **25th of the month** at sabeeline@comcast.net.

Please keep sharing your stories.

- If you have old beekeeping equipment you would like to donate or sell please call 916-709-0686
- SABA is looking for someone to maintain the membership list that goes out to members. Typical duties include updating the list each month and emailing SABA info to new members. Knowledge of Excel and email procedures is essential. Contact Mil Sutter @ milford.sutter@comcast.net
- For Sale: 5 frame nucs in large or medium boxes. Call for price. Mil Sutter - 916-591-8587



Welcome New Members

Gary & Laura Hankins, Pine Grove
 Kelly Turney, Pilot Hill
 Carolyn Fox, North Highlands
 Peter Kerr, Davis
 Hazel VanEvera, Chico
 Marilou Good, Chico
 Chanowk Yisrael, Sacramento
 Jennifer Hamburg, Granite Bay
 David Fielder, Orangevale
 Janet McDonald, Brian Sehnert, Sacramento

Garney Hargan, Fair Oaks
 Brian Sanders, Sacramento
 Jack Rounds, Sacramento
 Leo Harshbarger, Orangevale
 Kristina Scott, Orangevale
 George Van Wieren, Sacramento
 Mark & Christa Kerns, Lincoln
 Tom Dozier, Galt
 G. Brian Gilmore, Sacramento

C A L E N D A R O F E V E N T S

SABA's regular meetings are held the third Tuesday of *each* month at 7:30 p.m., at the Belle Coolidge Community Center, 5699 South Land Park Drive (on the southeast corner of Fruitridge Road and South Land Park Dr) in Sacramento. All are welcome!

May 8 - 2nd Saturday " Bee Day at the Bee" (Sacramento Bee) - Chaired by Brenda Terry - will follow up with report on event at May SABA meeting

May 13th-16th, Orangeville PowWow Days - "Kids Day-Sat. May 15th" - Chaired by Tex Winn- will follow up with report on event at May SABA meeting.

May 18th - SABA Meeting - *Talk on Swarms, Spring Build-up, and Hive Splits - with video presentation by Jim Lee from Vacaville, CA.*

May 23rd - Soil Born Farms - "Day on the Farm" - Chaired by Brian Fishback— contact Brian if interested in more information regarding assistance.

May 27th-31st - Sacramento County Fair- Chaired by Howard Mann- Please contact Howard to sign up and *"work" at the event.

*Note: We say "work" but it really isn't work. Everything is set up and all you have to do is be there for a few hours, answer a few questions (cheat sheets all around you), help look for the queen in the observation hive and have a good time! Even if you don't sign up to "work", come on out and see how simple it is to do.

May 29th - Fairytale Town (William Land Park, Sacramento) - "Farms, Friends & Fairytales" - 11AM to 3PM - to be chaired this year by Anita Winn with assistance from Richard Cuny. Come on out with your children and/or grandchildren and enjoy this local event.

June 12th - Annual SABA UC Davis Picnic/Open House. Sign-up sheet and information flier at next meeting, May 18th.

July 14th-Aug 1st - California State Fair- Check your availability to help and contact Pam Hill at Sacramento Bee Store ASAP.

SACRAMENTO AREA BEEKEEPERS ASSOCIATION

2110 X STREET,
SACRAMENTO, CA 95818

Website: www.sacbeekeepers.org
E-mail: info@sacbeekeepers.org
916-222-7807

Address Correction Requested



—The Bee Line—
May 2010

