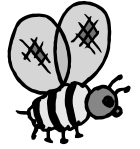


The Bee Line



www.sacbeekeepers.org

2010—Issue 02

February 2010

2010 CLUB OFFICERS

President: Brian Fishback
bfishback@frontiernet.net

Vice President: Anita Winn-
saba2010vp@gmail.com

Secretary: Joseph Watkins

Treasurer: Mil Sutter

www.sacbeekeepers.org

COMMITTEE CONTACTS

Donations: Nancy Stewart

Hospitality: Mil Sutter

Library: Kathy Mallory

Mentors: George Bleekman

Newsletter: Kathy Waldorf—
sacbeeline@comcast.net

Inventory: Joseph Watkins

WebMaster: Martha Maldonado

Membership Chair—Mil Sutter

INSIDE THIS ISSUE:

| | |
|-----------------------|-----|
| Book Review | 1 |
| President's Corner | 2 |
| January Minutes | 2-3 |
| SABA training classes | 4-5 |
| Honey Recipe | 6 |
| Membership Coupon | 7 |
| Classified | 7 |
| Calendar of Events | 8 |

Mission Statement:

To promote interest in, and awareness of, the vital importance of the honeybee and beekeeping to agriculture, commerce, and the public at large.

Mentors' Tips for February

As the weather warms, get out to check your bees. Take a look at the brood pattern and quantity, and check the queen. Look for adequate honey and pollen stored around the brood. If necessary, feed your bees some sugar water and pollen patties.



Submitted by Randy Kehoe

BOOK REVIEW

The Barefoot Beekeeper; now that sets up a mental picture that does not sound too appealing – but not to worry -- this book, new to the library, does not advocate going barefoot while working your bees. The title is a metaphor for the author's feeling that beekeeping should be kept as simple as it can be. I can't say that I would agree with all that he writes but what do I know (remember two beekeepers ten opinions).

P.J Chandler advocates the use of top bar hives, low impact, and sustainable, chemical free beekeeping. He bluntly points out where he believes other beekeepers are in error using the "traditional" hive equipment. He is a "Brit" and makes some references that we colonists may not be familiar with but that in no way detracts from the heart felt message he delivers.

Even if you have no desire to experiment with top bar equipment the book is a good read; as he discusses honey bee behavior and no matter what shape the box is, this stuff is good to learn. (The author also provides a web site to support top bar beekeepers; www.biobee.com and if you are a web crawler there are also many links that you can follow.)



For us slow learners there are pictures and illustrations to help us out. When you get a chance check this book out. Use YOUR library – if this one is out, there are many other great books available.

Ernie Buda

Time to Renew Your Membership!!

Renew your membership for 2010 if you haven't yet done so! Benefits include helpful mentoring, reduced fees on classes, social events and access to vast resources including this riveting newsletter!!

See coupon on page 7 for easy renewal.

SABA DUES
\$15.00 Annually

PRESIDENT'S CORNER

What a great honor it was at our January meeting to stand before our association and share ideas for the upcoming year. With so many suggestions it really gave us a lot to work with.

Thank you for those members who have accepted volunteer positions within the association to make this year fulfilling for us all.

There still are a few positions we need assistance with. Please remember volunteers positions are designed to be easy going and not a major time consuming task. So please contact us through our website email and say, "How Can I help?" We will contact you personally to determine what best fits your participation level. Membership Coordinator and Outreach Presentations Coordinator are two areas that are in need of extra help.

I know for myself that losing a few hives this winter was heart wrenching. As I attend different bee meetings and spoke with other beekeepers I have learned that I am not alone, nor did losing the colonies mean that I neglected my hives. Its nature and it can be natural.

The most important thing I have learned recently is to get my supplies put away properly and begin to prepare for this coming season.

Continuing to push forward with the passion I started because I remember the joy as I watched the colony grow larger, knowing my bees and I are helping the environment, but most of all the sweet taste of my efforts.

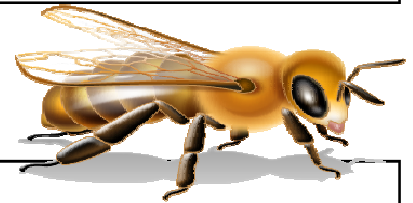
I challenge us all to use the mentoring program, sign up for classes, talk amongst fellow beekeepers to assist us all in producing the best honey of all.

Another reminder that our website is up and running so check in and see what is going on, send us your suggestions.

Thank you

Brian Fishback

JANUARY MINUTES AND PROGRAM NOTES



The regular monthly Association Meeting was called to order at 7:34 on Tuesday, January 19th, 2010 at the Belle Coolidge Community Center

Brian Fishback introduced himself as the 2010 president and welcomed members and visitors. He acknowledged the leaders in attendance that made 2009 a wonderful year for SABA, including Ernie Buda, past President and Dave Ogden, past Vice President and Dennis Larson, past Treasurer. He then introduced the new officers, Vice President Anita Winn, Secretary Joseph Watkins and Treasurer Mil Sutter. Brian invited new members to introduce themselves. The meeting was an Open Forum to survey what members want from the association this year.

Member suggestions included:

- Potluck Dinner as well as Question and Answer Sessions with a panel of mentors, as we've done in the past
- Workshops to assemble equipment like we did in 2008 at Ernie's shop, but do some things here at the meeting
- Organization should push the county to align codes with city, so we can encourage urban apiaries.
- More advanced courses like queen-rearing record keeping tools or methods that professional beekeeping use
- Touring members' homes a couple of times a year to look in their hives in the afternoon
- Advanced beekeeping classes to present substantial skill sets used in the commercial industry. Since we have given support to the Harry H. Laidlaw Jr. Honey Bee Research Facility, perhaps they could provide a symposium for us on a weekend, rather than the customary midday, midweek.
- Maybe Häagen-Dazs Garden can give us a private tour during their open house coming up in the spring.
- Lesson with a Master Gardener about planting bee-friendly botanicals
- Equipment swap night buy trade or sell
- A bee exchange system for people who may want someone to take bees off their hands.

Brian introduced Martha Maldonado, our new Webmaster who is updating the website (www.sacbeekeepers.org) and would like suggestions to improve the site. Brian thanked Brenda Terry for her services as newsletter editor, The Bee Line, and introduced Kathy Waldorf, taking on the task for 2010. Kathy requested that items for the newsletter be submitted to her by the end of the previous month, so she can distribute during the first ten days of the new month.

<Continued next page>

Mil Sutter has provided refreshments for several years, but has taken on the Treasurer job, so we need someone to handle refreshments, which SABA pays for, but we need help to make the purchase and set up each month.

Dave Ogden has handled name tags and made the wonderful name tag tote board, but he needs help to welcome visitors and new members at the back table, to monitor our membership, to update the membership list and to assist in filling out the membership forms. Membership is going to grow again come springtime!

Kathy Mallory discussed the SABA Library organization efforts. There are about 60 books here and about 25 out. Please look around the house and if you find any SABA books, bring them in. Kathy travels often, so she could use some backup help from someone close to Rancho Cordova to bring in the books each meeting.

Ernie discussed upcoming Beekeeping classes. The February class is full; the March class is 2/3 full. If you hope to attend, register soon. Classes are limited to 30-35 people. Ernie suggests beginners take a class before you get bees from one instructor, and then after you get bees; take it again from another instructor. Randy Oliver, Serge LaBesque and Eric Mussen are the instructors

SABA Equipment Inventory – Please Email Brian if you have SABA inventory items at home, so we can update the list. We have a refractometer at the Sacramento Bee Store.

Jeanlaurie Ainsworth suggested that rather than have individuals do all the work; we should share duties in committees. Ernie added that work needs to be divided into small enough increments that the burden doesn't burn people out.

Brian encouraged members to take advantage of the Mentor Program. George Bleekman will update the biographies on the Mentors List. If you don't have a Mentors List, see Mil Sutter and he will send it to you. This is not available on the website. Mentors have significant experience. While partners range in experience, they are helpful to provide a second set of eyes. Brian recognized the Mentors and Partners in attendance.

A member asked for expert tips about what we should be doing in February. SABA Mentor Bob Sugar responded that if you've already got bees, the hive probably needs help now, so mix some sugar syrup, generally two parts sugar to one part water, put it in a jar with a tension lid, poke some small holes in the lid, invert it on small sticks in the top box and cover with an added super. If there is not much pollen store left in the combs, add a pollen patty to meet their protein needs. After winter solstice, the queen starts laying eggs and gearing up, so the bees need feeding. Bees may be grazing for early pollens such as winter-blooming Eucalyptus, Rosemary and Mustard. Beekeeping is anticipation of what bees are going to do. They will need extra space. Build the extra equipment, get ready now. If they get crowded, they'll begin preparations for swarming.

Association Meeting adjourned at 8:35 pm. There were 47 people in attendance. The Business Meeting was called to order at 8:57 pm, with 30 people present.

- Treasurer Mil Sutter reported that we have approximately \$2300 in checking, and the \$5,000 Certificate of Deposit. Mil shared the decision of the Executive Board, which is that annual dues will be \$15 per calendar year, no matter when during the year the application is submitted, like a fishing license. This decision will simplify the recordkeeping and collection processes, will reflect the fact that membership is a great value at this low rate, and will help postpone any eventual need to raise dues.
- The need for General Liability Insurance was discussed. We are covered for the time we are in meetings at the Belle Coolidge Community Center. The Executive Board is researching the costs of coverage for members doing presentations in the community.
- Brian reiterated that with a membership of 200-plus, we will need more volunteers to work in committees to meet our growing concerns.
- Brian announced that the February Meeting will feature Fred Stewart of the Sacramento Bee Store, who will discuss prepping hives and assembling various kinds of frames.
- Brian discussed the Newsletter and suggested we encourage electronic distribution to save money. He suggested the possibility of selling advertising space to offset costs.
- Brian reviewed the discussions brought up in the Association Meeting, including the Website, Mentor Program, and Educational Classes.
- Russell announced that he will be seeking volunteers to staff the upcoming Cal Ag Day event in March.
- Secretary Joseph Watkins requested that when members speak during meetings, they state their names, for better recordkeeping. He also requested that any members who do presentations or demonstrations in the community report those activities to keep a history of SABA's contributions.

Dismissed at 9:15 pm.

Submitted by Secretary Joseph Watkins

Sacramento Area Beekeepers Association

Beekeeping Classes

| | | |
|------------------------------|-------------------------------|-----------------|
| Saturday February 20, 2010 | Beginning Beekeeping (Closed) | Randy Oliver |
| <u>Sunday</u> March 14, 2010 | Beginning Beekeeping (Closed) | Serge Labesque |
| Saturday April 24, 2010 | Beginning Beekeeping | Serge Labesque |
| Saturday May 22, 2010 | Beginning Beekeeping | Randy Oliver |
| Saturday June 19, 2010 | Intermediate Beekeeping | Dr. Eric Mussen |
| Saturday July 17, 2010 | Intermediate Beekeeping | Serge Labesque |

(These classes historically have filled early so don't delay your registration)

Who should take beginning classes: The course content is designed for those wanting to explore beekeeping; to gain knowledge and understanding about honey bee behavior and learn some options available for the management of honey bee colonies. No experience is required for these entry level classes.

For those with beekeeping experience the courses also provide an excellent opportunity to refresh and hone beekeeping skills and knowledge and to get updated on the latest information on beekeeping options. I have monitored the classes many times and each time I learn something new.

Who should take Intermediate classes: The intermediate classes are designed for beekeepers who understand the basic process of beekeeping and want to explore the process in more detail. It is recommended that for the Labesque session you be familiar with the use of follower boards. If you have any question about the class being appropriate for you background contact a course coordinator.

Instructors: Dr. Eric Mussen is an internationally known and respected expert on all aspects of beekeeping. He is on staff at UC Davis. He allows considerable time in his presentation for questions so as to address informational needs of the participants.

Randy Oliver is an author and researcher, and successfully keeps bees commercially without synthetic chemicals.

Serge Labesque teaches beekeeping at Sonoma Community College, is a sought after speaker and has authored many published articles. He uses no chemicals, nor natural compounds save for occasional sugar syrup feeding to manage his colonies.

Both Randy and Serge feel that by understanding bees one can make their own best management decisions for keeping colonies alive and healthy.

We recommend that you take a beginning class from each of the instructors. While there will be some redundancy, you will be exposed to a range of methods - you can then choose how you desire to manage your bees. For new beekeepers we recommend that you take one of the classes before you get bees and a second class after getting bees. The presentation will have new meaning for you and you will find you have many new questions!

COURSE INFORMATION AND FEE: The course fee is \$35.00, for SABA members \$30.00. Classes will begin at 8:30 am and end at approximately 4:30 pm. Classes will start on time so registration begins at 7:30 am. Classes are held at the Sacramento County Dept. of Agricultural building, 4145 Branch Center Road, Sacramento, CA.

COURSE COORINATORS: Ernie Buda, email 2211budae@att.net 916-761-3802

Bruce Waln, email bruce_waln@sbcglobal.net

TO REGISTER FOR THE CLASS: Complete the registration form below and mail with payment to SABA at 7051 Bisbee Drive, Sloughouse, CA 95683 no later than the Monday before the class. (Or you may sign up at Sacramento Beekeeping Supplies, 2110 X Street, Sacramento, CA.) You will receive a confirmation by email or telephone. Late registration will require authorization by a course coordinator.

Sacbeekeepers.org info@sacbeekeepers.org

Registration for Beekeeping class(es)

NAME(s) _____

ADDRESS _____

PHONE _____ CELL _____ EMAIL _____

Session(s) you wish to register for: _____

Payment amount enclosed _____ Current beekeeping experience _____



FEBRUARY MEETING TOPIC

Fred Stewart and his associate Serge from Sacramento Beekeeping Supplies will be talking about frame assembly and the different types of foundation available. Together they will be demonstrating different assembly techniques and foundations and explaining the reasons for different foundations.

Fred Stewart, retired from Caltrans, and in the past kept 75 to 100 hives for orchard pollination. Fred and along with his wife, Nancy, own and operate the Sacramento Beekeeping Supply. Fred has experience with queen rearing, and is active and is a long-time active participant in SABA, WAS, and CSBA.

Got Bees?

Sacramento Beekeeping is now taking orders for package bees and nucs to be available in April. The down payment is \$50.00 for a 3 lb. package with a new, marked queen or \$70.00 for a 5-frame nuc with a new marked queen. The down payment is half of the full price. We take package orders for four deliveries, usually on the four Saturdays in April (depending on weather, of course). The nucs are usually ready mid to late April and you can arrange your own pick-up time – as long as it is about 10 am so you can get the bees home and open for ventilation as soon as possible.

We also have blue orchard mason bees available right now – 3 tubes for \$25.00. You can store them in the refrigerator until the weather warms a little more and then put them out with a mason bee “house.” Mason bees hatch late March to mid April, are excellent pollinators for early spring blooms, but are “finished” in June. For the first time this year we will have a second type of mason bee that matures in June and lives about 2 months. These are also 3 tubes for \$25.00 – available now, but to be kept refrigerated until late May.

RECIPE OF THE MONTH

Chicken Breasts with Spicy Honey-Orange Glaze

Makes 4 servings

- 1/4 cup honey
- 2 Tablespoons frozen orange juice concentrate, thawed
- 1 teaspoon grated orange zest
- 1 clove garlic, minced
- 1/2 teaspoon salt
- 1/8 teaspoon crushed red pepper flakes
- 4 boneless, skinless chicken breast halves
- 1 Tablespoon margarine
- 1/2 teaspoon vegetable oil
- Fresh parsley or green onions, optional garnish



In small bowl, combine honey with juice concentrate, orange zest, garlic, salt and red pepper flakes. Rinse chicken with cold water and pat dry. Season lightly with salt. In large non-stick skillet, heat margarine and oil over medium-high heat. Add chicken and cook about 4 minutes, until seared. Turn chicken; cook another 4 minutes until just cooked through. Pour honey mixture over chicken and cook, turning chicken to coat as sauce begins to thicken, about 2 minutes. Serve chicken breasts with honey-orange glaze spooned over the top.

Prep Time: 15 minutes

Bake Time: 10 minutes

Nutrition: 392 Calories * 53 g Protein * 21 g Carbohydrates * 152 mg Cholesterol * <1 g Dietary Fiber * 422 mg Sodium * 10 g Fat Total

Reprint from National Honey Board

Volunteers Needed!!

SABA is looking for the a Chairperson in the following areas:

Refreshment Chair Librarian Co-Chair Membership Chair

ALWAYS WANTED: Your contributions of articles, websites, recipes, tips, questions, book reviews, ads and other bee-related items for future newsletters. Email them to the Kathy Waldorf by the *30th* of the month at katwaldorf@comcast.net. Please keep sharing your stories.



If you have old beekeeping equipment you would like to donate or sell please call 916-709-0686

Two Full time Beekeeping positions available in Ventura, CA. See <http://www.beesource.com/forums/showthread.php?t=237438> for more info.

CUSTOM MADE UNCAPPING SCREEN AND SETTLING TANK (all in one unit) WITH TOP COVER.

Just the right size for a Sideline Operation, -All Stainless Steel -Fine mesh screen for draining cappings.

-Convex base allowing all honey to enter the 2" honey gate -Light weight unit -Mostly unused and in excellent condition

-Compare to more costly factory units not having all the features above. -38" tall with a 32" diameter.

\$150.00. George Bleekman, (916) 791-0448 bleekman@surewest.net

SABA 2010 Membership Coupon

Name(s)*: _____

Business Name: _____

Mailing Address: _____

City, State Zip:* _____

E-mail Address*: _____ Phone #*: () _____

New _____ or Renewing _____ Want to receive newsletter by: Email _____ or Postal _____ (*check one*)

Current level of beekeeping activity: _____

Privacy Notice: To facilitate sharing of information and carpooling, SABA publishes a member "phone list" each spring, including member names, cities or zips of residence (*not* street addresses), email addresses, and phone numbers. This summary list is *only* disseminated to current SABA members (never to other persons or organizations) and is *not* posted on the website. Your information (noted by * above) will be included unless you check (following line(s)) that you do not want your _____ email address and/or _____ phone number listed. (Note that the complete membership list is made accessible to SABA officers and committees as necessary for them to do their tasks.)

Complete this, clip it out, and mail it with your \$15 check (made out to SABA), to SABA c/o Sacramento Beekeeping Supplies, 2110 X Street, Sacramento, CA 95818, Attn: SABA Treasurer.

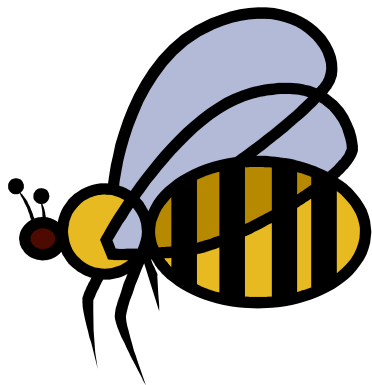
Please take a moment and write down your interests and needs on the reverse side, this will help the association mold our meetings.

CALENDAR OF EVENTS

SABA's regular meetings are held the third Tuesday of each month at 7:30 p.m., at the Belle Coolidge Community Center, 5699 South Land Park Drive (on the southeast corner of Fruitridge Road and South Land Park Dr) in Sacramento. All are welcome!

Tues Feb 19, SABA Meeting, 7:30 pm Special Presentation from Fred Stewart

Sun, March 7, 9am-5pm, 2010 Bee Symposium
SUBUD Center, 234 Hutchins Ave,
Sebastopol. \$25 by March 1, \$30 after. See <http://pfsbbees.org/> for more information.



Welcome New Members

Carlos De La Fuente, Newcastle
Noel & Jeanette Kelly, Sacramento
Louis Moore, West Sacramento
Chuck Dobretz, Lodi
Marty, Zach & Isabel Kurtovich, Alameda
Steve Flanders, Roseville
Joel & Christina Dowty, Elverta
Margaret Gillespie, Sacramento
Pete Laudi, Sacramento
Dave Rude
Pete & Nancy Raver, Orangevale
Lou & Ellen Nishimura, Fair Oaks
Marjorie Wallace, Vacaville
Brian & Jeanne Condon, Orangevale
Mark Uebner, Loomis

SACRAMENTO AREA BEEKEEPERS ASSOCIATION

2110 X STREET,
SACRAMENTO, CA 95818

Website: www.sacbeekeepers.org
E-mail: info@sacbeekeepers.org
916-222-7807

Address Correction Requested



—The Bee Line—
February 2010



Happy Valentines Day!